



**Address:**  
**Aarambh Residency**, Madhav Farm Road,  
 Opp.Kalhar Bungalow, Vastral,  
 Ahmedabad - 382418.

**Contact No.:**  
 +91 84900 60053  
 +91 84900 60054  
 +91 94265 73004



2 & 3 BHK Luxuries Life Style Apartment

**Developer**  
  
 ANANT INFRACONE

**Architect**  


**Structure**  
 STRUCTURAL  
 DESIGNER  
 Amrut H. Patel  
 Ahmedabad.  
 Mobile : 098250 06842

Creating Promising Future for **26 family** only!



START YOUR  
DREAM JOURNEY  
HERE





We have 26 units of flats which are spacious, located in an elegant neighborhood and surrounded by natural greenery in abundance.



# Ground Floor Plan





## A Home that makes you complete!

Home is where your heart is & with time it becomes the most beautiful part of your life. "Aarambh" presents intelligently designed spaces at an affordable prices.

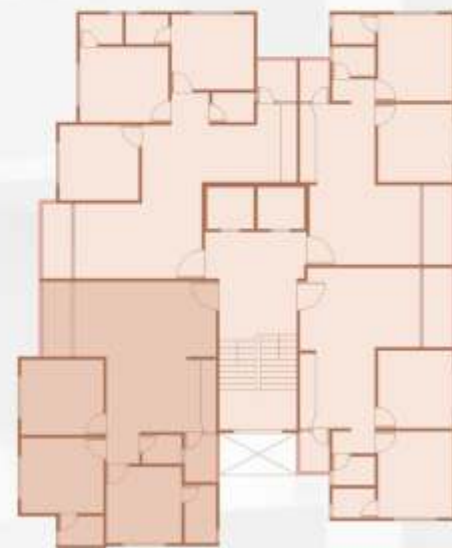


## Typical Floor Plan



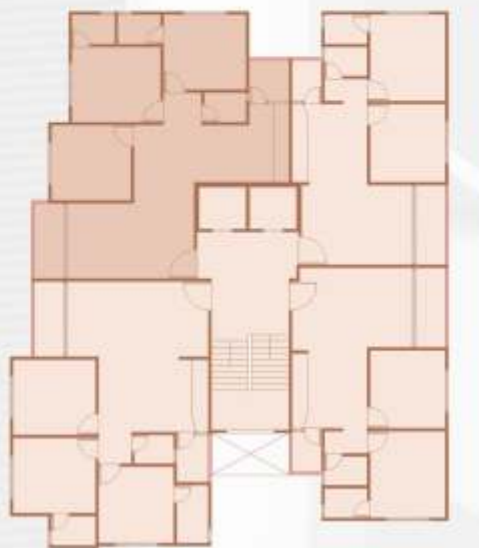
# Unit 1

(101-601)



# Unit 2

(102-702)





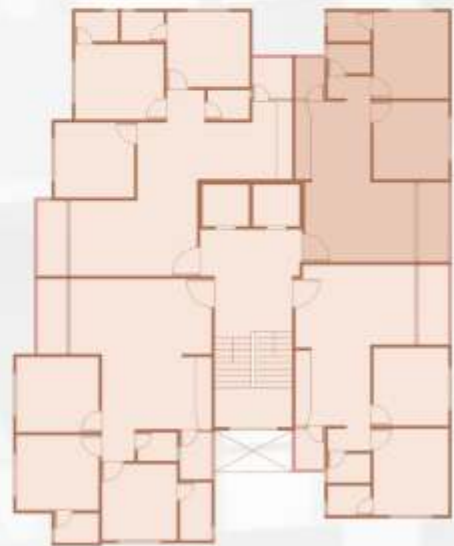
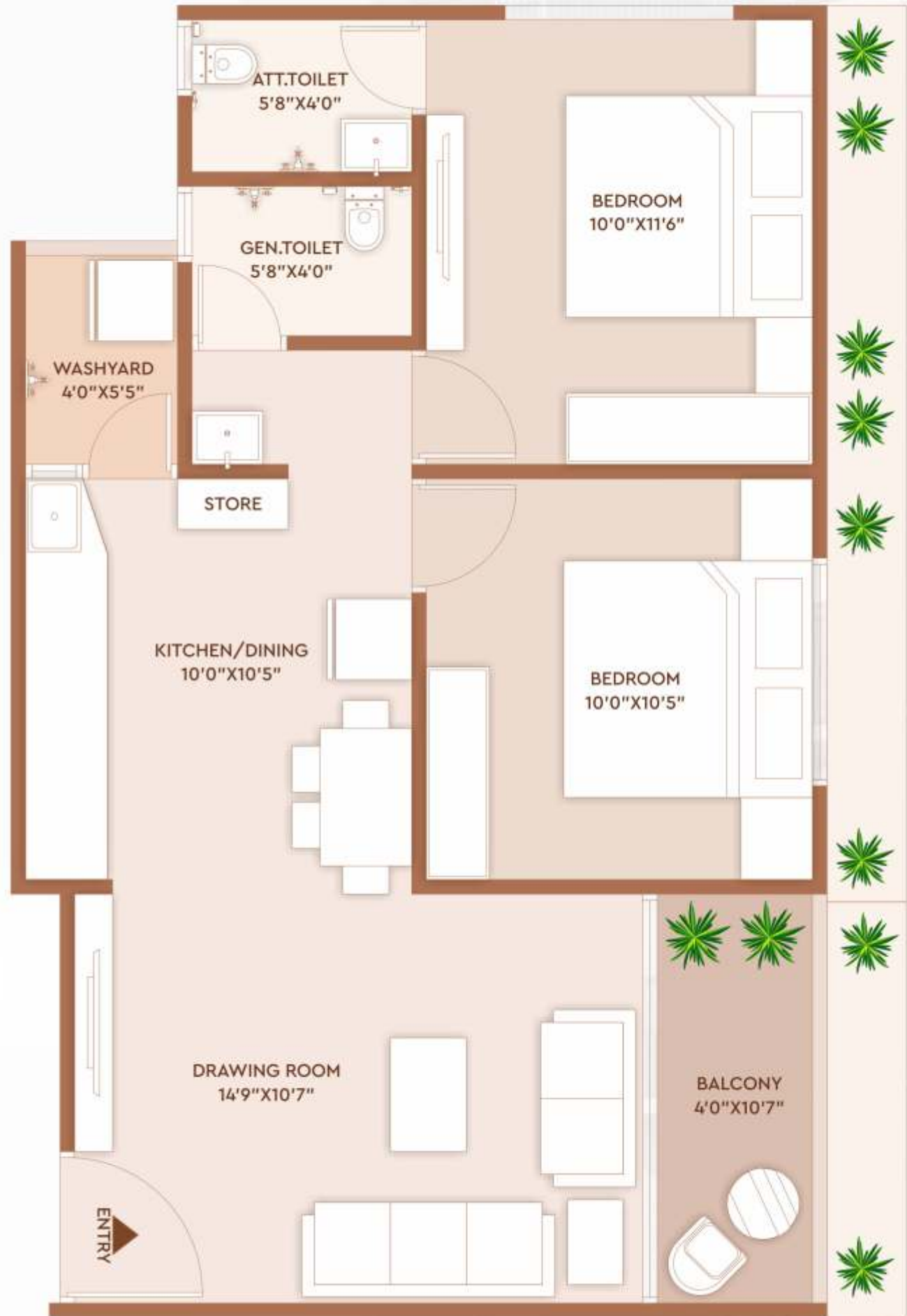
**We offer well designed 2 & 3 BHK apartments/flats.**

We have spaces that go beyond your imagination. 'Aarambh' is a unique mixture of fine building design, prime location & exceptional standard of living.



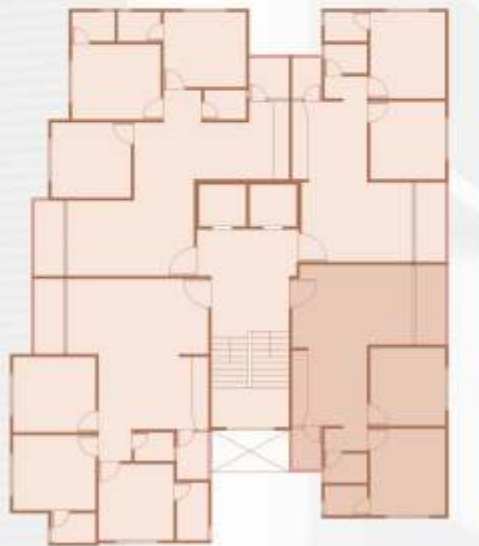
# Unit 3

(103-703)



# Unit 4

(104-604)





## -: Amenities :-



Children Play Area



Gazebo



Club House



CCTV Camera



Allotted Parking



Lift



Garden



24 Hour Water (Private borwell)



Solar Panel



Terrace Garden



Security Cabin



Senior Citizens Sitting Area



26 Family



Fire

## -: Specifications :-

**STRUCTURE:** Earthquake resistant RCC frame Structure.

**PLASTER:** Internal side single coat mala plaster with a base putty finish and external double coat plaster with texture paint.

**FLOORING:** Decorative Vitrified tiles in living, dining kitchen bedroom and other areas.

**KITCHEN:** Mirror polished granite platform with glazed tiles up to lintel level.

**TOILET/BATHROOMS:** Designer superior quality glazed tiles, up to lintel level and flooring.

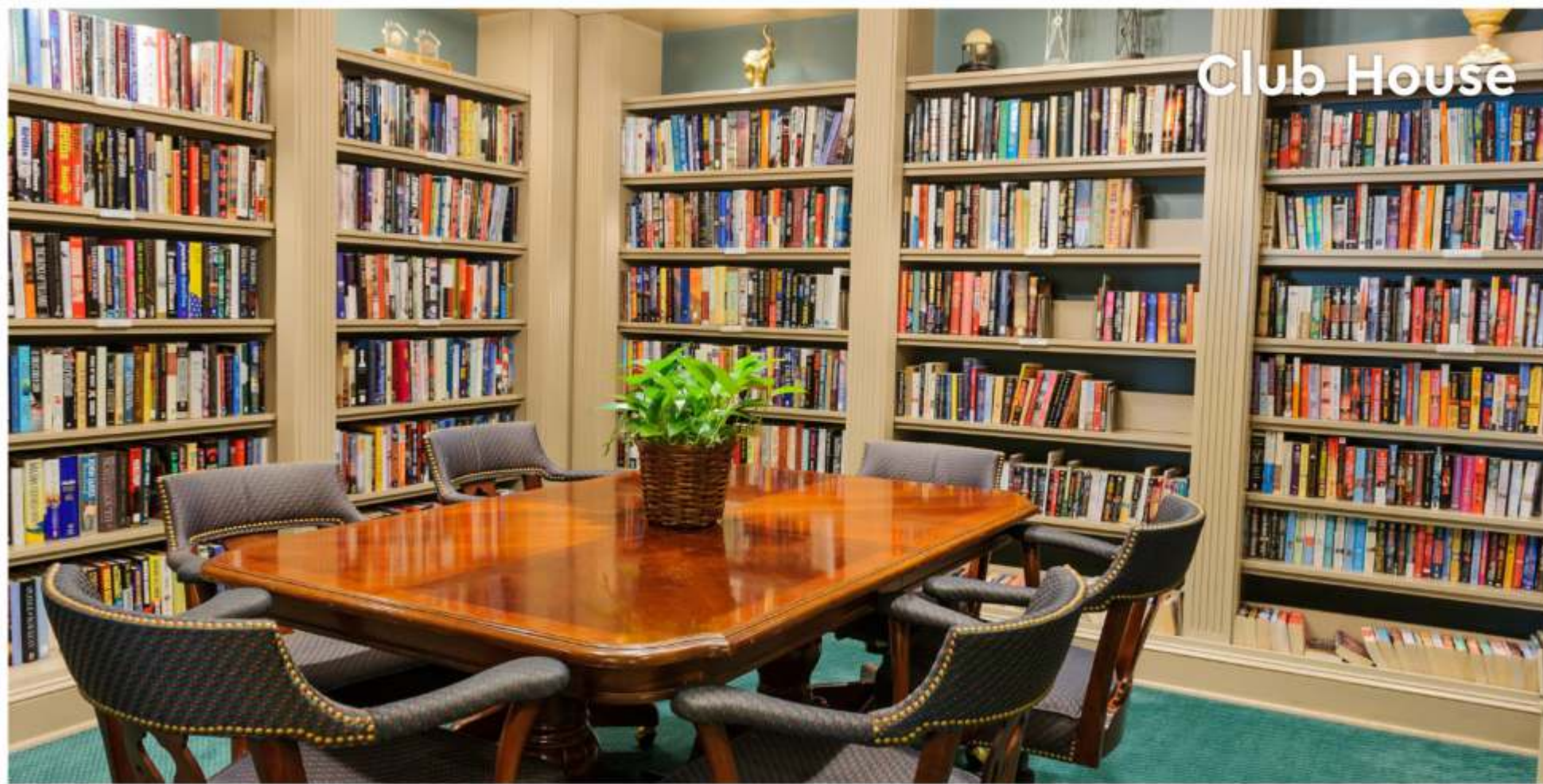
**PLUMBING:** Concealed center point plumbing & adequate points with standard fitting.

**DOORS & WINDOWS :** Decorative all door with wooden frame with Laminate finish Flush door Shutter with lock. All window will be made of anodize coted aluminum section with concealed lock.

**ELECTRIFICATION:** 3 phase concealed copper wiring with good quality accessories and sufficient electric point.

**DRAINAGE:** Main Drainage line provided by AMC.





## Experience exceptional Living with 'Aarambh'

Indulge in the best of city life, malls, entertainment, dining withing walking steps of your home. Everything you need is within your reach with, Aarambh. Make your dream turn into reality.