

“We Shape Our Building; Thereafter, They Shape Us.”
- Winston Churchill



4 BHK LUXURIOUS BUNGALOWS

DEVELOPERS :
DEVAM BUILDCON

SCAN FOR LOCATION



📍 **LOVE KUSH VILLA**, Opp. Mahavir Enclave Bungalows, PDPU Road, Raysan, Gandhinagar.

☎ **+91 98985 18435, 96013 01306**

✉ **devambuildcon3@gmail.com**



Love Kush Villa

4 BHK LUXURIOUS BUNGALOWS

ઈચ્છાઓ, આંકાંક્ષાઓ અને સમણાઓ
ચાર દિવાલો સુધી સિમીત ન રહેતા
આપના મનની મોકળા બની વિસ્તરશે
ઘરાથી આકાશ સુધી
આપણી જીવનશૈલી બનશે...

વધું સંપન્ન...
વધું સંપૂર્ણ...
વધું વિશાળ...



an open treat to
a grand welcome
set only for you

Clean and sufficiently capacious peaceful seating with fragrant flowers, leaves shedding sounds with bird chirpings and more of such will be received by you right from the first time you move towards the luxury i.e. Your habitat spaces.



24 HOURS SECURITY



ENTRANCE GATE



CCTV CAMERA



club office with luxurious internal
facilities like...

This is their home... Your kids need a space which they will remember Forever. The space where they would spend their childhood, the most innocent day of their Life with utter enthusiasm and elegance.



SENIOR CITIZEN AREA



CHILDREN PLAY AREA









lush landscapes
luxurious living



The greenery at **LOVE KUSH VILLA** is overwhelming. You can spend hours strolling along the lush gardens, the vast open spaces.

And just when you want to step indoors, excite your senses.

- 
 LANDSCAPE GARDEN
- 
 PARKING AREA
- 
 STREET LIGHTS
- 
 24 HOURS WATER SUPPLY





the only hums you'll hear
will be of birds.

"our moments were best captured during sunset when sun rays stream through the groves of blooming trees, setting the backdrop ablaze."







UNIT NO. 1

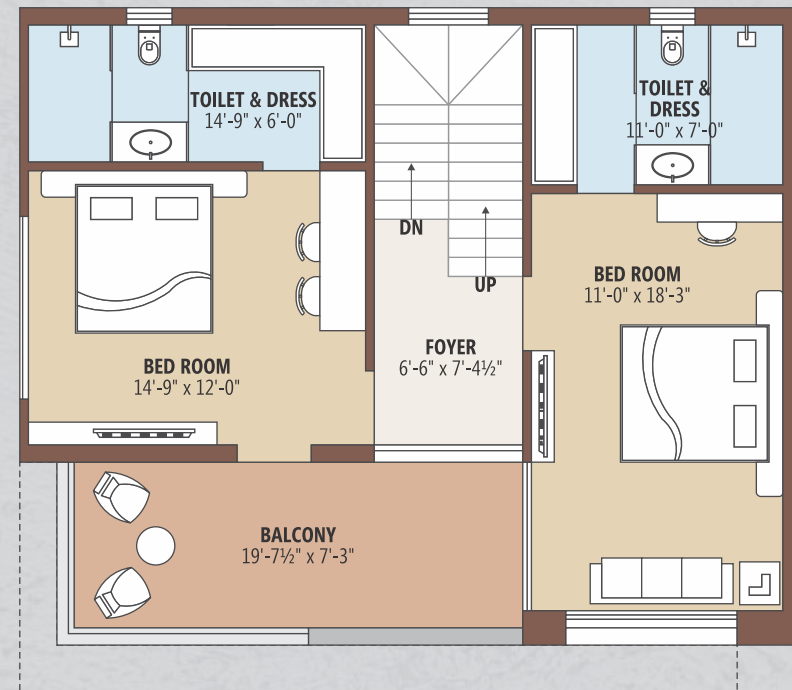
GROUND FLOOR PLAN



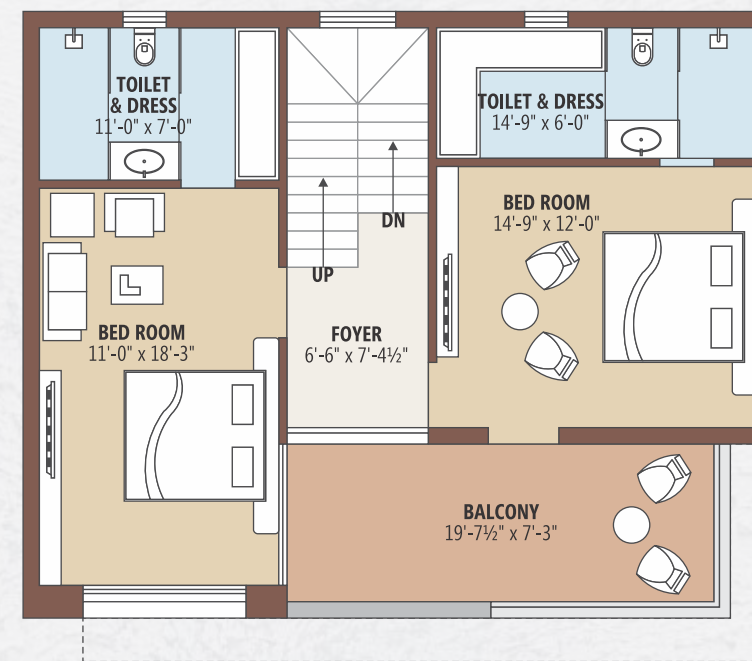
UNIT NO. 2

GROUND FLOOR PLAN

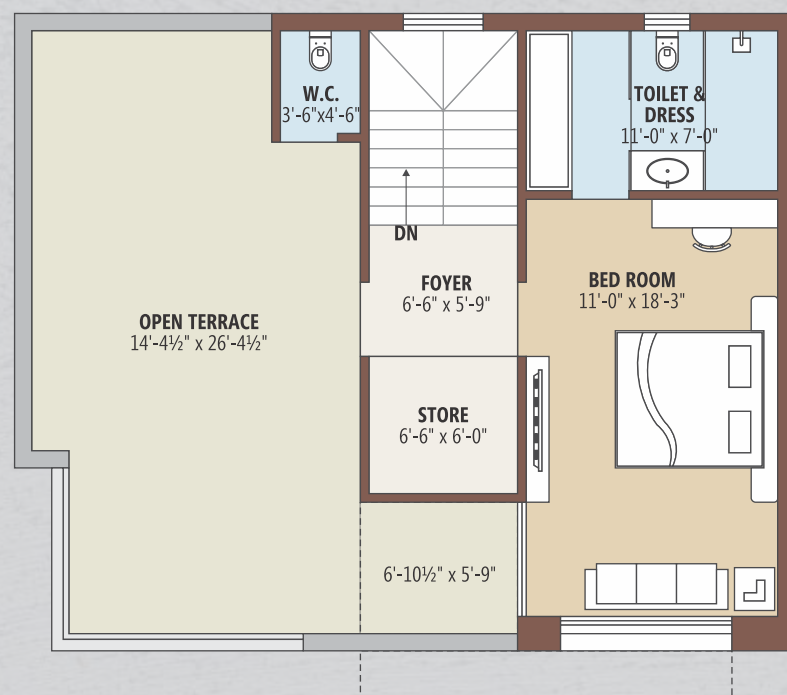
FIRST FLOOR PLAN



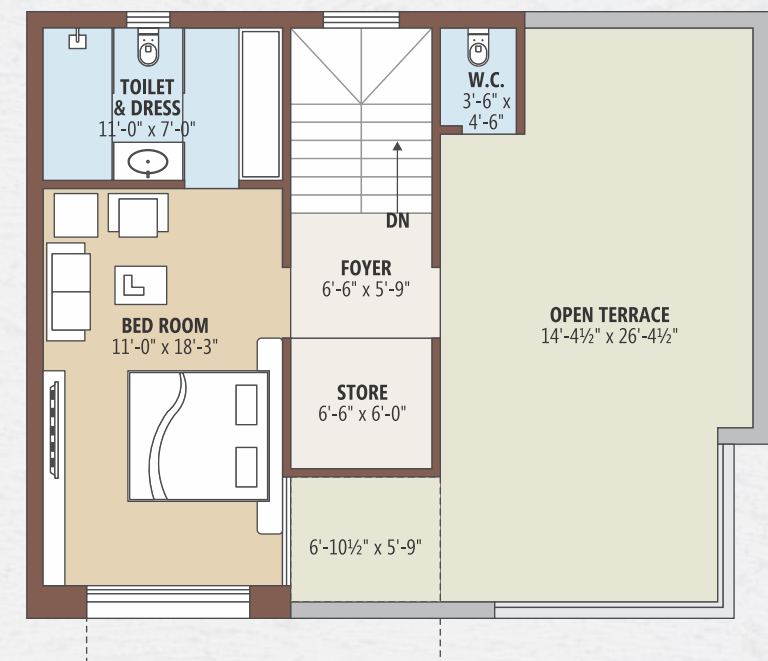
FIRST FLOOR PLAN

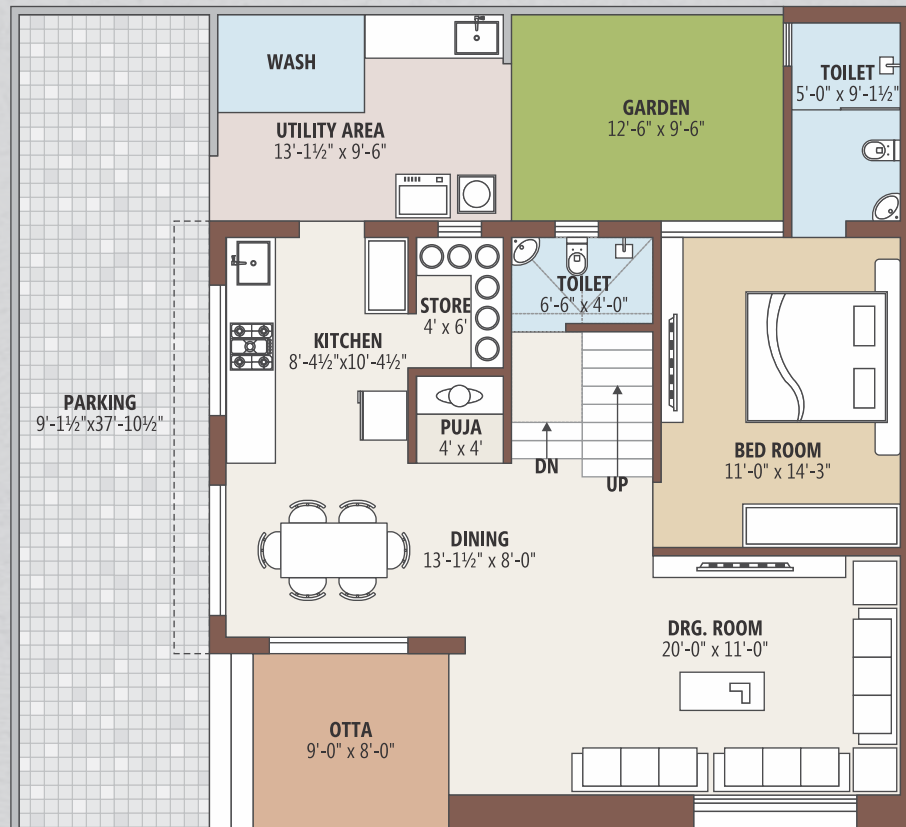


SECOND FLOOR PLAN



SECOND FLOOR PLAN





UNIT NO. 3

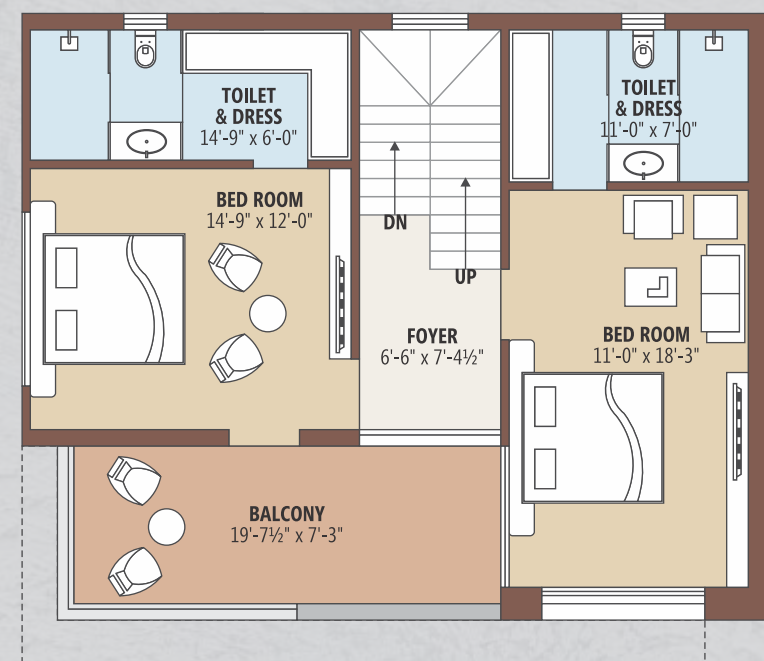
GROUND FLOOR PLAN

UNIT NO. 4

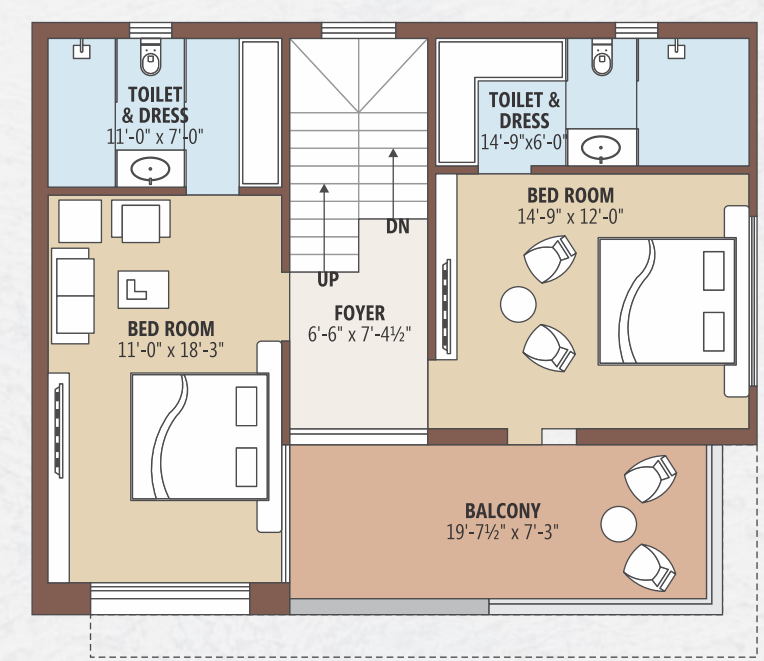


GROUND FLOOR PLAN

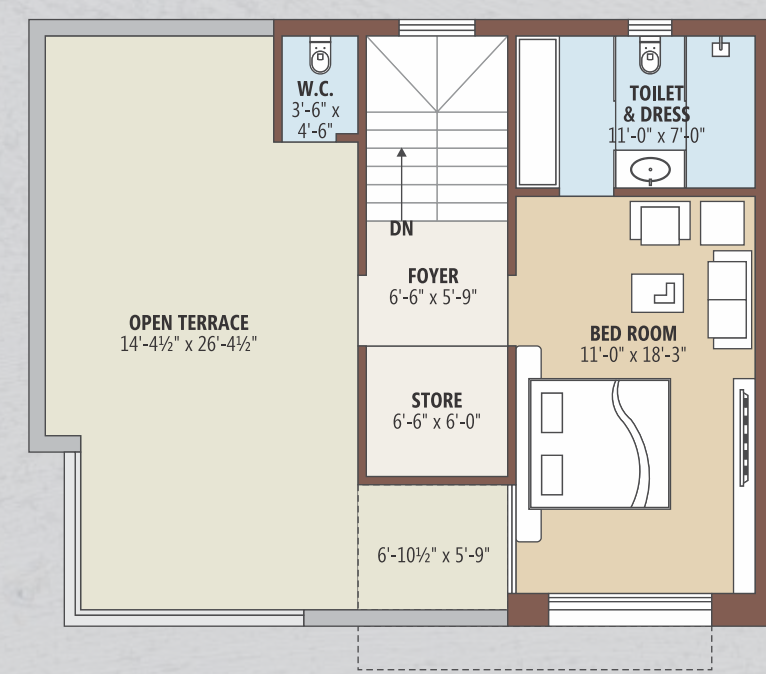
FIRST FLOOR PLAN



FIRST FLOOR PLAN



SECOND FLOOR PLAN



SECOND FLOOR PLAN



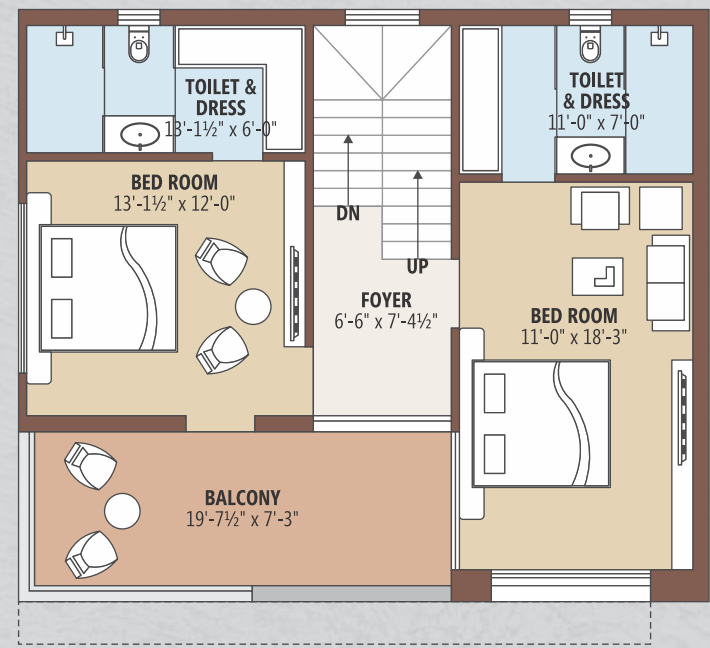


UNIT NO. 5

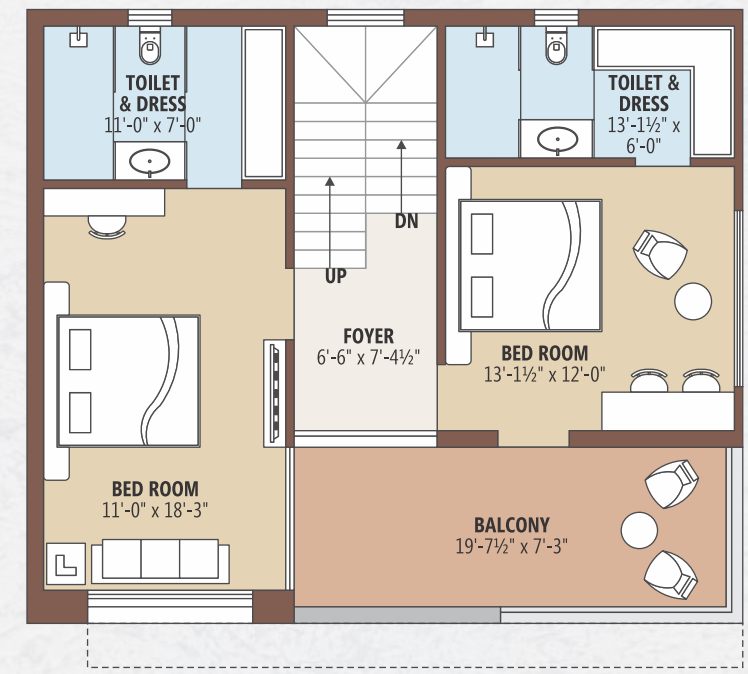
UNIT NO. 6



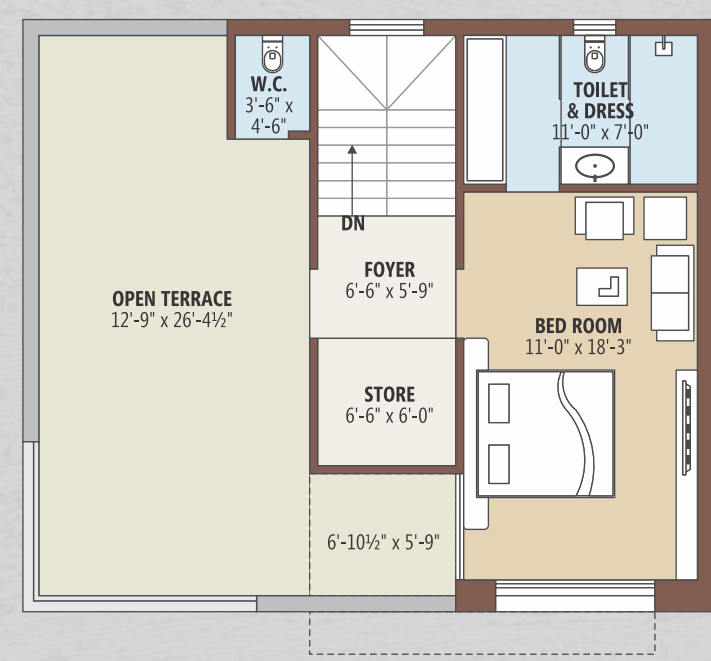
FIRST FLOOR PLAN



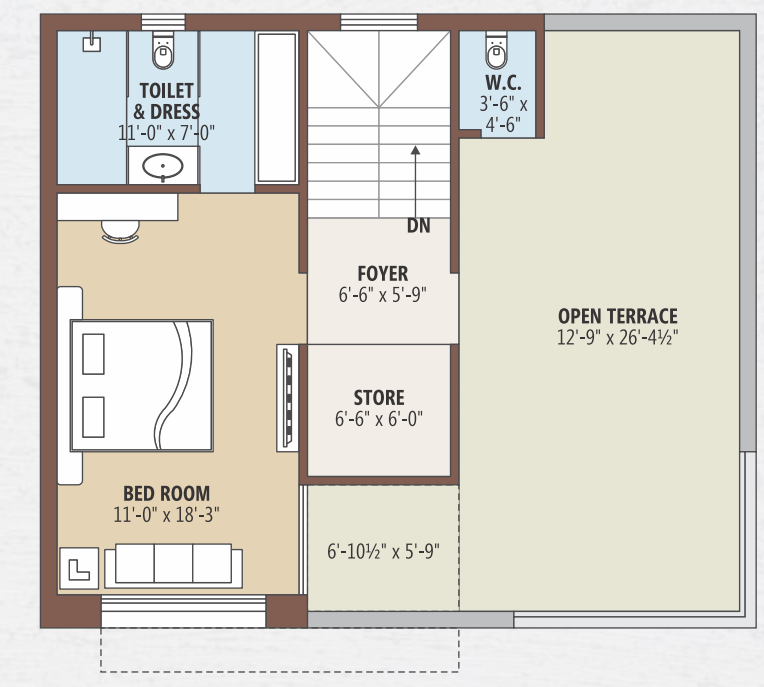
FIRST FLOOR PLAN



SECOND FLOOR PLAN



SECOND FLOOR PLAN

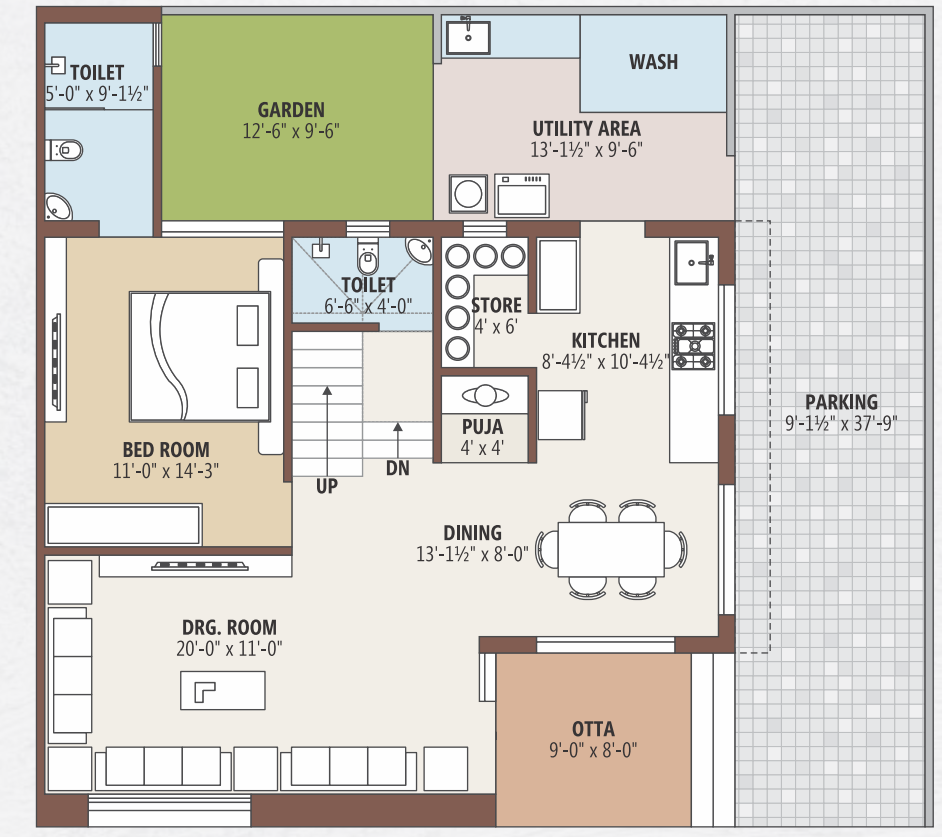




UNIT NO. 7

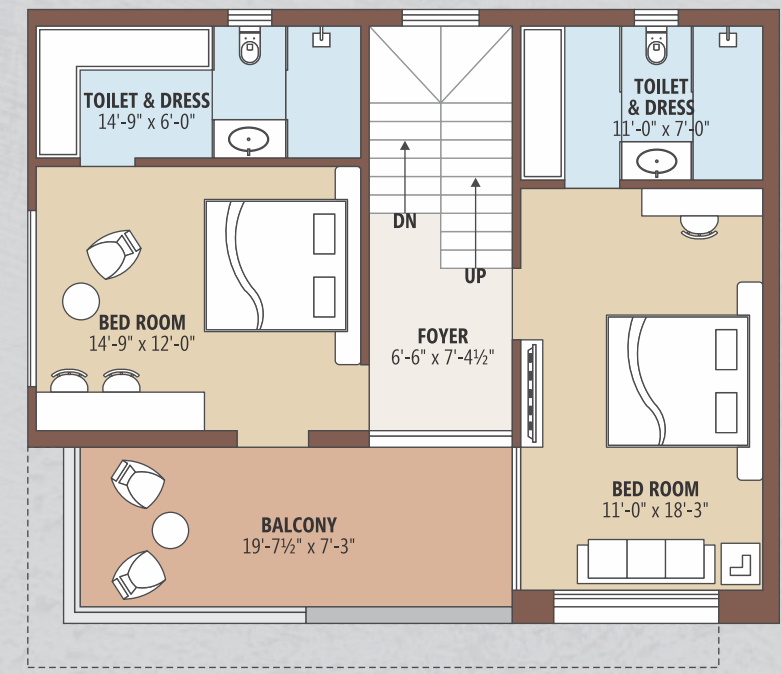
GROUND FLOOR PLAN

UNIT NO. 8

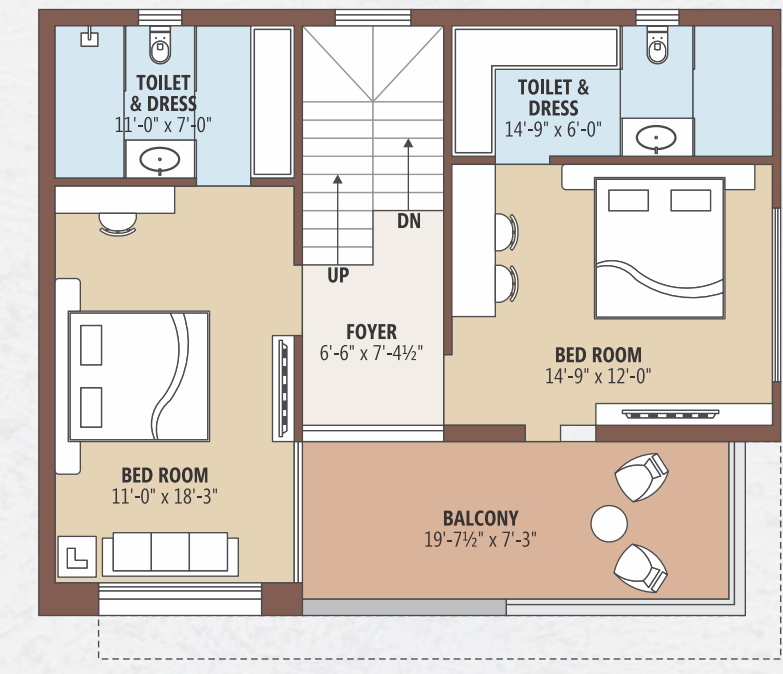


GROUND FLOOR PLAN

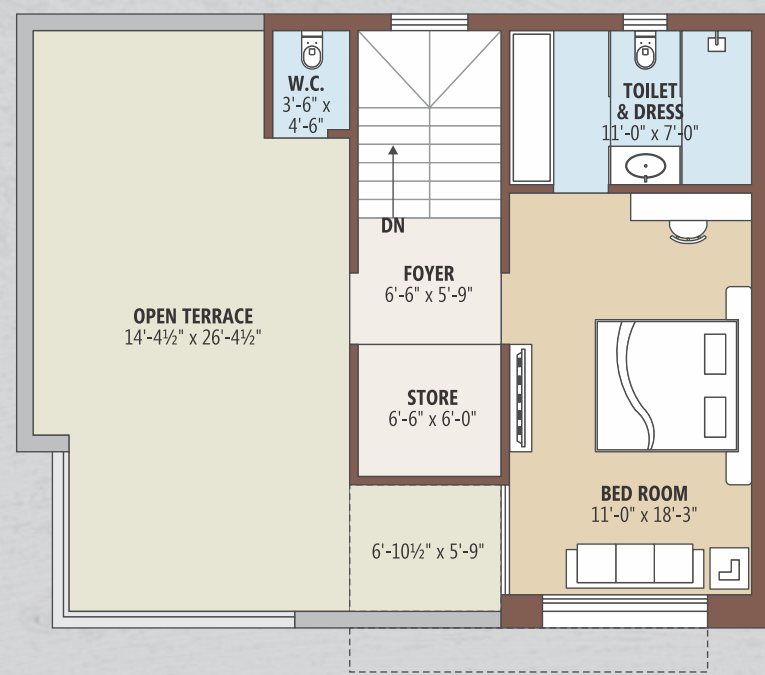
FIRST FLOOR PLAN



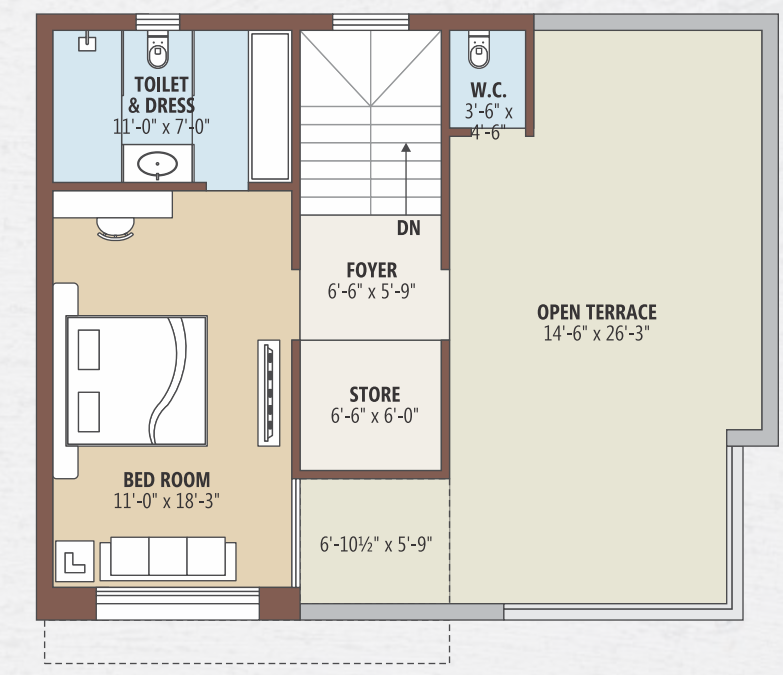
FIRST FLOOR PLAN



SECOND FLOOR PLAN

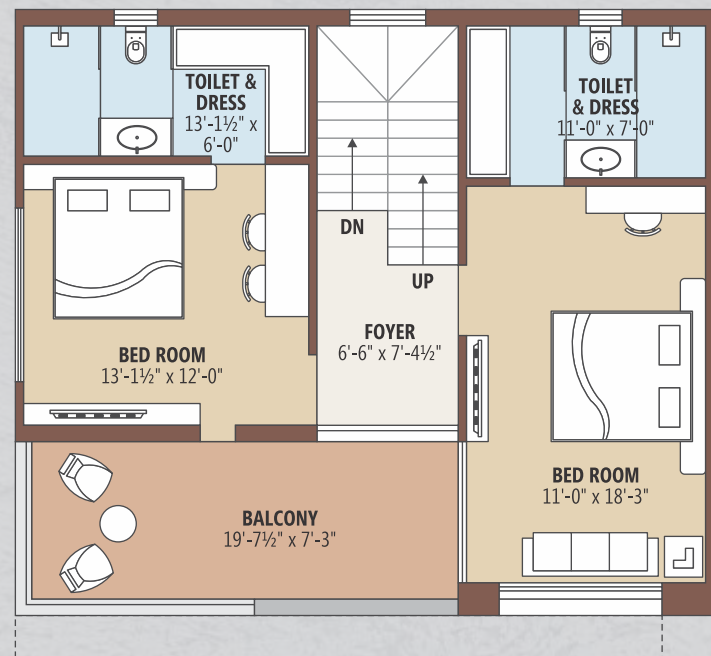


SECOND FLOOR PLAN

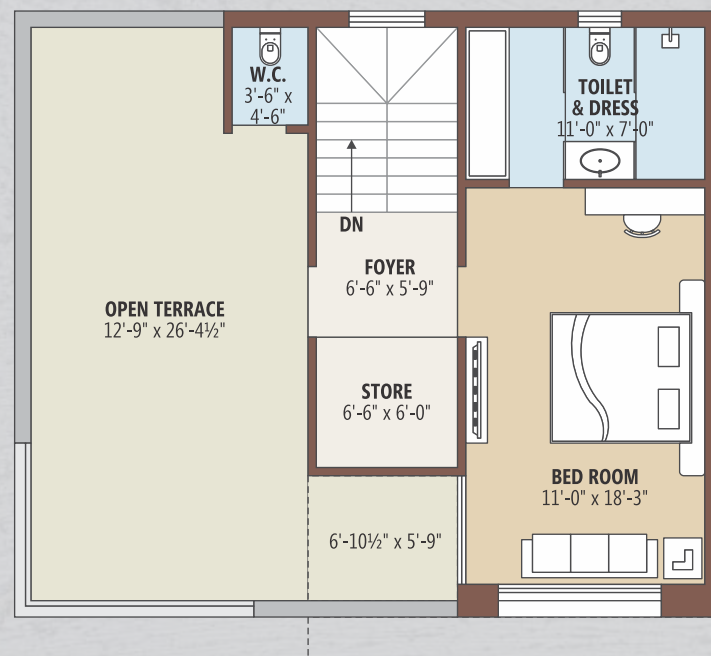




FIRST FLOOR PLAN



SECOND FLOOR PLAN



hear, it's not day dreaming
its living your
 dream everyday

LOVE KUSH VILLA is in a League of its own, from the moment you drive in. Experience life of indulgence in beautifully landscaped environment, Lush gardens and serene expanse of green.



SPECIFICATION



Structure

Earthquake resistant with brick masonry as per new by laws.



Flooring

Vitrified tiles for in all rooms, kota stone in wash area.



Kitchen

Mirror polished granite platform with S.S. sink, designer glazed tiles up to lintel level.



Toilet

Designer tiles on floor and walls up to lintel level. Branded sanitary & bath fittings.



Doors / Windows

Decorative main door & other flush doors with wooden frame and windows in granite frame.



Plumbing

ISI CPVC and UPVC pipes for water supply with automization system Branded CP fittings.



Electrification

Branded ISI modular switches with copper wiring the adequate number of points, MCB distribution panel.



Wall finish / Elevation

Internal mala plaster with white finish putty. Attractive external elevation with double coat plaster & Brick wall cladding & texture paint.



Terrace

China mosaic for open terrace.

Special Notes :

- This brochure is not as legal part of document but only for easy understanding to customer
- Irregular payment cause for cancellation of the booking
- All rights are reserved by developers to make any changes in plan, scheme elevation, dimension and other details there in to comply with statutory regulation shall be binding to all the members.



LOCATION MAP

the
location
is perfect. It's halfway to everywhere.



ARCHITECT :
the **HAPPY**
DESIGN

DEVELOPERS :
DEVAM
BUILDCON

STRUCTURAL :
PCUBE
consultants

Scan For Location



Site Address :
LOVE KUSH VILLA
Opp. Mahavir Enclave Bungalows, PDPU Road, Raysan, Gandhinagar.